

LARGE

SCREEN

IMPACT



12'h x 16'w SmartVision® **ILLUMINATOR®**

Trailer Mounted LED Screen With Chromatek 10 Bit Digital Processing

Impact Video's **ILLUMINATOR®** large screen trailer mounted LED display is perfect for any outdoor event. The screen can be set up in as little as 60 minutes and is ideal for outdoor applications that require a high quality screen with limited set up time. The **ILLUMINATOR®** display offers superior image quality with respect to brightness levels, depth of color and pixel uniformity.

The **ILLUMINATOR®** package contains a full on-board control room with switching capability that supports most video playback formats. Additional capabilities include multi-camera packages, real time data & scoring feeds, as well as graphics production.

Also included is a concert quality 12,500 Watt Bose sound system with a 16 input mixing console and wireless microphones.

To get the **ILLUMINATOR®** for your next big event—
Contact Impact Video Today!



12'h x 16'w LED Screen Specifications

- Pixel Pitch: 15mm
- Aspect Ratio: 4:3
- Screen Height: 11.81'; Width: 15.75'
- 6,000 Nit Brightness
- 1.07 Billion Display Colors
- Graduation Method: 1,024 Shades Per Color
- Input Signal: HDTV, SDI, NTSC, PAL, S-Video, VGA
- Operating Temperature: 15 Degrees to 120 Degrees Fahrenheit
- Horizontal Viewing Angle: 170 Degrees
- Vertical Viewing Angle: 100 Degrees
- 21' Hydraulic Lift Capable of 360 Degree Rotation.
- At Maximum Height Capacity, The Top Of The Screen Is At 33 Feet And The Bottom Of The Screen Is 21'.
- Minimum Recommended Viewing Distance - 50'
- Average Power Consumption 65-130 Amps
- Maximum Power Consumption—250 Amps At Peak White
- Control System: Chromatek 10 Bit Digital Processing

Truck/Trailer Dimensions

- Tractor: 27' Long x 8' Wide x 13' 4" Tall
- Trailer: 33'5" Long x 8'4" Wide x 13'3" High
- Combined Trailer & Screen Weight: 43,000 lbs
- Minimum Distance Required To Extend Horizontal Outriggers: 39"

Generator/Power Specifications

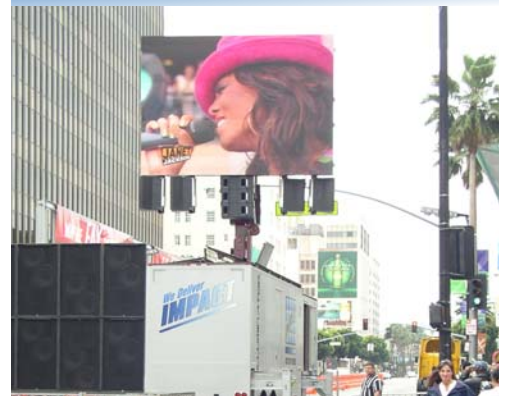
- Generator Output (110/220V): 60 KVA Diesel Generator
- Decibel Level: Less Than 10db At 50'
- Fuel Capacity: 35 Gallons

Control Room Equipment

- 1 Panasonic AGMX-70 8 Input Switcher
- 3 Sony PFM 14N1A Preview Monitors
- 1 Auto Patch 1Y16 Matrix Routing Switcher
- 2 Hotronic AP41 Frame Synchronizer/Time Base Correctors
- 1 Sony DSC 1024G Scan Converter
- 1 Tektronix 1750A Vectroscope/Waveform
- 1 AMX Control System With Touch Screen
- 1 DirectTV Satellite System
- 3 Sony UWW-1800 Betacam SP Player/Recorders
- 1 Sony SVO 5800 S-VHS Player/Recorder
- 1 JVC Mini DV Player
- 1 Pioneer V-7400 DVD Player
- 2 Mackie HR 824 Studio Monitors
- 1 FFV Omega Digital Video Recorder

Audio System

- 1 Yamaha Promix 01 16 Channel Audio Console
- 8 Bose 1800-V Amplifiers
- 2 Shure UHF-Series Wireless Microphones
- 1 Denon DN-T620 CD/Cassette Player
- 4 Bose LT 4402-II Panaray Loudspeakers
- 6 Bose 502BEX Extended Range Subwoofers
- 1 Bose Panaray System Digital Controller
- 1 Klark Teknik DN410 Dual Parametric E.Q.



IMPACT VIDEO

Burbank

Las Vegas

Montreal

Phone: 877-877-9255

www.impactav.com