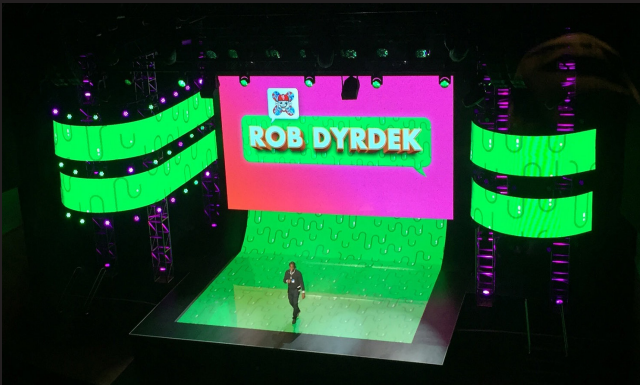




# digiLED

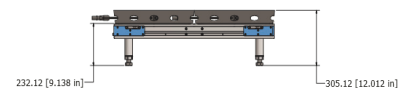
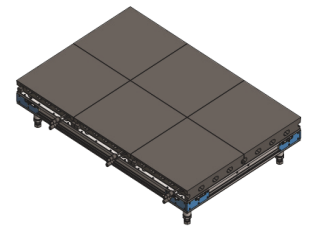
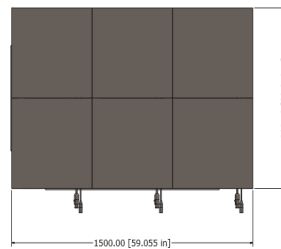
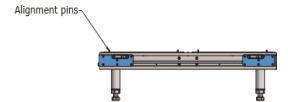
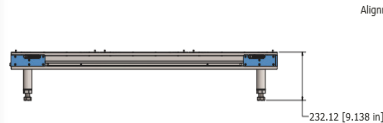
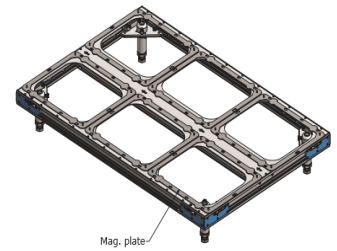
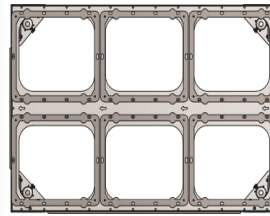
## DLP 5.9mm LED Floor System



The DLP 5.9mm LED Floor System offers designers the ability to layer beautiful, high-resolution imagery that covers the floor itself in their production and video designs with this innovative system. You can seamlessly extend an LED back or side wall right into an LED floor or create a standalone LED floor within your overall design. Exceptional image quality, seamless floor design integration, easy flexible configuration, and precise, accurate processing are all built-in to the reliability of the DLP 5.9mm LED Floor System.

Working closely with LED manufacturer digiLED, we have designed a unique frame arrangement to hold high resolution 5.9mm pixel pitch modules in a 3x2 module arrangement to allow for extremely versatile creative design possibilities. Ease of setup and load-out, as well as fast access replacement for troubleshooting is thoughtfully addressed by using guide pins for side-to-side alignment with an industrial magnet system which holds each individual LED module, and its own individual Plexiglas covering, in place. This means that any tile can be quickly and easily placed—and replaced—without having to de-construct the entire floor. With interchangeable legs, the floor can go from a minimum height of 12" to a maximum height of 48" making a true impact on your design.

1 x 1.5 M LED Deck

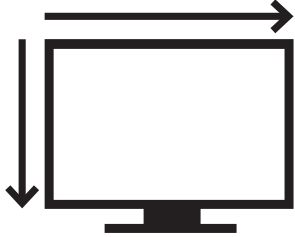


MONTREAL | LOS ANGELES | WASHINGTON DC | LAS VEGAS

[www.gobigscreen.com](http://www.gobigscreen.com)

T: 877.877.9255

## PHYSICAL



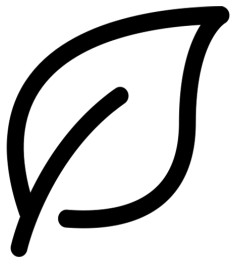
- Module Height: 500mm / 19.69"
- Module Width: 500 / 19.69"
- Module Depth: 73mm / 2.9"
- Module Area: 0.25sqm / 2.69sqft
- Modules per m2: 4
- Module Weight: 6.6kg / 14.55lbs
- Module Weight per m2: 26.4kg / 58.20lbs
- Maximum modules hung: N/A
- Maximum modules stacked: N/A
- Transparency: No
- Floor Height (Min): 305.12mm / 12.012"
- Floor Height (Max): 1,219.2,, / 48"
- Frame Weight (w/o LED): 85.98kg / 189.56lb

## OPTICAL



- Pixel Configuration: IntelLED SMD 2828 (3 in 1)
- Pixel Pitch: 5.9mm
- Pixel Resolution (module): 168 x 168 / m2
- Pixel Density (m2): 28,224 pixels / m2
- Brightness:  $\geq 6,000$  cd/m2
- Minimum Viewing Distance: 5.9m (19.35')
- Viewing Angle: H 160° / V 120°
- Grey Scale: 4,096 grade / 64G

## ENVIRONMENTAL



- Indoor/Outdoor: Indoor or Outdoor
- Input Voltage: 100V-220V AC 50/60 HZ
- Average Power Consumption: 300W / m2
- Maximum Power Consumption: 900W / m2
- Power Connector: Neutrik
- Ingress Protection Rating: Front: IP65 Back: IP54
- Temperature Range: -20°C to +45°C
- Humidity: 10% to 90% Non-Condensing
- Average No-Failure Time: >10,000 Hours
- Life Span: >100,000 Hours
- Blind Spot Rate: <0.00003
- Certification: ETL, FCC

## DIGITAL



- Receiving Card: Nova MRV210-6
- Input Source: AV, S-Video, VGA, DVI, YPbPr, HDMI, SDI
- Processing Color Depth: 16 Bit
- Depth Refresh Rate: >1,920 Hz
- Driving Method: 1/7 Scan
- Control Distance: CAT5 Cable <100m; Single Mode Fiber: <10km