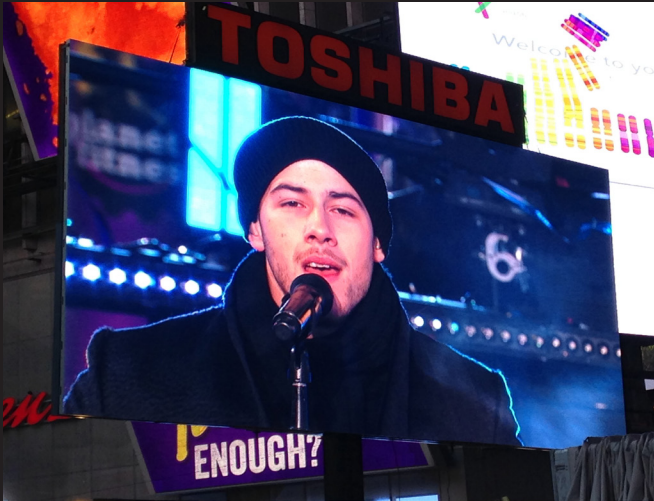


# ZEUS HD

22' x 42'

Trailer-mounted LED Screen  
with **illumiLED8**mm



Impact's ZEUS® HD large screen trailer mounted LED display is perfect for any outdoor event. The screen can be set up in as little as 60 minutes and is ideal for outdoor applications that require a high quality screen with limited set up time. The ZEUS® HD package contains a full on-board control room with switching capability that supports most video playback formats. Additional capabilities include multi-camera packages, real time data & scoring feeds, as well as graphics production.

The **illumiLED8** ZEUS® HD LED Displays offer superior image quality with respect to brightness levels, depth of color and pixel uniformity. For even more versatility, the same screen is also available in modular panels that can be hung in your venue or mounted on a truss system.



MONTREAL | LOS ANGELES | WASHINGTON DC | LAS VEGAS

[www.gobigscreen.com](http://www.gobigscreen.com)

T: 877.877.9255

# ZEUS HD

## SCREEN SPECIFICATIONS



- Pixel Pitch: 8mm
- Weight: 15,000 lb
- Screen Height: 22'; Width: 42'; Depth: 34"
- 7,000 Nit Brightness
- Control System: Novastar Pro HD LED Processor
- Input Signal: Native HD-SDI, (1080i) Or (720P) Native HD DVI, (1080i) Or (720P) Composite Video (480i)
- 69 Billion Display Colors
- Graduation Method: 65,536 Shades Per Color
- Operating Temperature: 15 Degrees To 120 Degrees Fahrenheit
- Horizontal Viewing Cone: 140 Degrees; Vertical Viewing Cone 75 Degrees
- Rotation: 360 Degrees (180 Degrees Left/180 Degrees Right)
- At Maximum Height, The Top Of The Screen Is At 38' and The Bottom Of The Screen Is At 16'
- Minimum Recommended Viewing Distance - 26'
- Average Power Consumption 65 - 130 Amps
- Maximum Power Consumption - 250 Amps At Peak White

## TRUCK/TRAILER DIMENSIONS



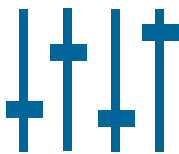
- Tractor: 27' Long x 9' Wide x 13' 4" Tall
- Trailer: 53' Long x 8' 2" Wide x 13' 4" Tall
- Outriggers: Extend 48" From The Trailer
- Trailer Footprint: 5 3' Long x 16' 6" Wide With Outriggers Fully Extended
- Weight: Tractor- 18,000 lb; Trailer - 52,000 lb; Total = 70,000 lb

## GENERATOR/POWER SPECIFICATIONS



- Generator: Kohler 60 KVA
- Fuel Capacity: 150 Gallons
- Usage: 2-3 Gallons Per Hour
- Shore Power Requirements: 200 Amps of 120/208V 3-Phase Power; Cam-lock Connectors With Series 16 Female Cam Plug; 235A, 600V #2 to 2/0 AWG

## CONTROL ROOM EQUIPMENT



- 2 Novastar HD LED Processor
- 1 Blackmagic HDSI Switcher
- 1 Mac Based Video Server w/ playback pro plus
- 1 HD Preview Monitors
- 2 Mackie HR 824 Studio Monitors

## AUDIO EQUIPMENT



- 2 EAW JFX 590 Loudspeakers
- 1 Mackie 12 Input Audio Mixer
- 1 QSC Audio Amplifier